

Kanon

1. cello

Joh. Pachelbel

4

9

13

17

21

25

29

33

37

39

2

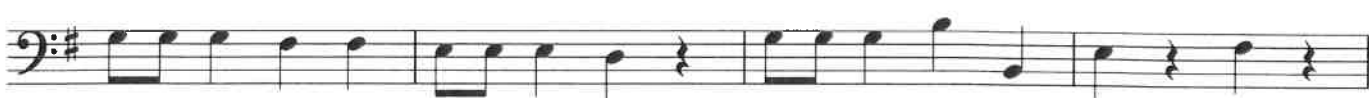
41



43



45



49



53



57



61



65



68



73



78



4 Scherzo

C. Webster

Presto **4**

p

4th pos.

fz 4th pos.

p

cresc. 4th pos.

f rit. e dim.

Meno mosso

33 *mf* (4 2) 2nd pos.

Musical staff 33-41 in bass clef, key of D major. It begins with a half note D2, followed by a quarter note G2, and then a series of eighth notes: A2, B2, C3, D3, E3, F3, G3, A3, B3, C4, D4. The staff ends with a half note D4. Fingering includes a 4-finger chord at the beginning and a 2-finger chord later. A '2nd pos.' bracket is under the final notes.

42 1 0 1 x 4 1 1 2 1 2 3 1 2 3 0

2nd pos. [4] 2nd pos. 4th pos. poco rit. a tempo

Musical staff 42-50 in bass clef, key of D major. It starts with a half note D2, followed by a quarter note G2, and then eighth notes: A2, B2, C3, D3, E3, F3, G3, A3, B3, C4, D4. Fingering includes a 1-finger chord, a 0-finger chord, and a 1x4-finger chord. Brackets indicate '2nd pos.', '[4]', '2nd pos.', and '4th pos.'. The tempo marking 'poco rit. a tempo' is at the end.

51 [4] 2nd pos. 4th pos.

Musical staff 51-59 in bass clef, key of D major. It starts with a half note D2, followed by a quarter note G2, and then eighth notes: A2, B2, C3, D3, E3, F3, G3, A3, B3, C4, D4. Fingering includes a 4-finger chord, a 1-finger chord, and a 4-finger chord. Brackets indicate '2nd pos.' and '4th pos.'.

Tempo I

60 rit. e dim. *p*

Musical staff 60-64 in bass clef, key of D major. It starts with a half note D2, followed by a quarter note G2, and then eighth notes: A2, B2, C3, D3, E3, F3, G3, A3, B3, C4, D4. The tempo marking 'rit. e dim.' and dynamic '*p*' are present.

65 4th pos.

Musical staff 65-68 in bass clef, key of D major. It consists of eighth notes: A2, B2, C3, D3, E3, F3, G3, A3, B3, C4, D4. A '4th pos.' bracket is at the end.

69 4th pos. (2 1) *fz*

Musical staff 69-72 in bass clef, key of D major. It consists of eighth notes: A2, B2, C3, D3, E3, F3, G3, A3, B3, C4, D4. Fingering includes 4, 3, 1, 4, 3, 0. A '4th pos. (2 1)' bracket and dynamic '*fz*' are present.

73 4th pos. (2 1) *fz* *p*

Musical staff 73-76 in bass clef, key of D major. It consists of eighth notes: A2, B2, C3, D3, E3, F3, G3, A3, B3, C4, D4. Fingering includes 4, 3, 1, 4, 3, 0. A '4th pos. (2 1)' bracket, dynamic '*fz*', and '*p*' are present.

77 *cresc.*

Musical staff 77-80 in bass clef, key of D major. It consists of eighth notes: A2, B2, C3, D3, E3, F3, G3, A3, B3, C4, D4. A 'cresc.' marking is present.

81 1 2 3 0 *4 0 *4 *f*

4th pos.

Musical staff 81-84 in bass clef, key of D major. It consists of eighth notes: A2, B2, C3, D3, E3, F3, G3, A3, B3, C4, D4. Fingering includes 1, 2, 3, 0, *4, 0, *4. A '4th pos.' bracket and dynamic '*f*' are present.

* Place only the 4th finger lightly on the A or D string to sound the harmonics.

2 Gavotte

J. B. Lully

Allegretto

1 *mf con grazioso*

5 14

10

15

20 *rit.* *piu mosso* 3rd pos.

3rd pos.

30 *rit.* *a tempo* 3rd pos.

35

40

45

50

Backward Extension

Forward Extension

Open hand between 1st and 2nd fingers by moving thumb, 2nd, 3rd and 4th fingers one half-step away from the 1st finger. Keep the same shape in the moving fingers.

